

Damen Schelde Marine Services



OCEANS OF POSSIBILITIES

DAMEN
DAMENSCHELDEPARTS.COM



Sulzer & Wartsila

Having been the first licensee manufacturer of Sulzer main engines, Damen Schelde Marine Services has accumulated more than 100 years of expertise and knowledge. Our stock includes of all wear and tear parts, which allows us to offer a high service level. This means that, combined with our in-house forwarding department, urgent deliveries can be made immediately. We can supply spare parts from our warehouses in Vlissingen, The Netherlands (in the centre of the ARA region), Shanghai and Singapore.

Parts supplied by DSMS meet the required product specifications and therefore are of the highest quality standard. All class-relevant parts will be supplied with a class certificate.



MAN B&W

Considering our long-lasting experience in supplying Sulzer and Wartsila engine parts, Damen Schelde Marine Services provides equal quality and service in the field of MAN B&W type engine parts. We maintain the same strict procedures in manufacturing and quality control. This will guarantee high quality together with a continuously expanding stock, meaning we are able to offer a high level of service.

Our scope of supply for MAN B&W type main engine parts is suitable for the following types:

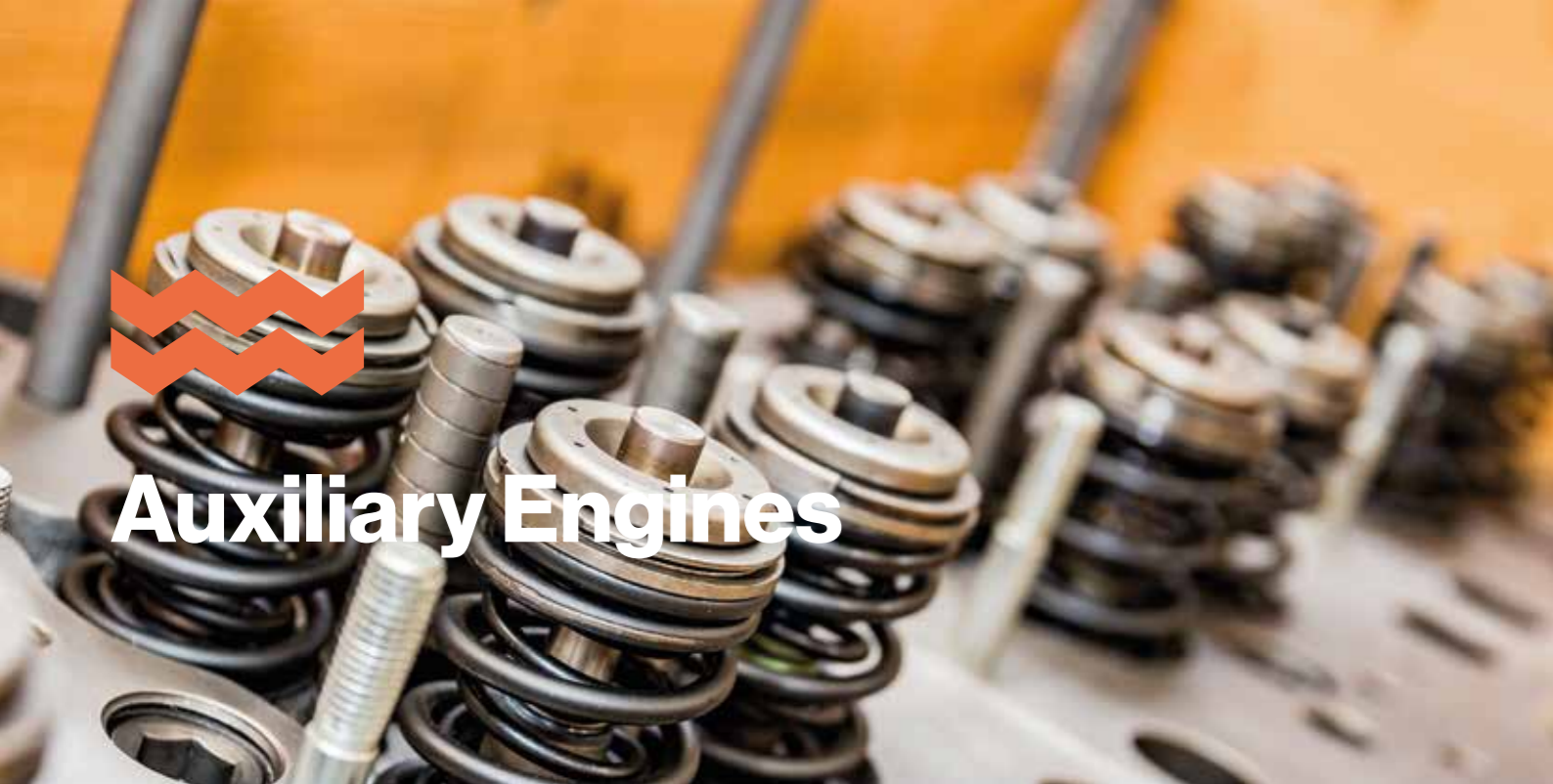
- 50 MC
- 50 MC-C
- 50 ME-C
- 50 ME-B
- 60 MC
- 60 MC-C
- 60 MCE
- 60 ME-B
- 60 ME-C



[DAMENSHELDEPARTS.COM](https://damenscheldeparts.com)

DAMEN
DAMEN SCHELDE MARINE SERVICES

DAMEN
DAMEN SCHELDE MARINE SERVICES



Auxiliary Engines

With our in-house knowledge, quality control and unique stock position we offer the following scope of supply suitable for the following engine types:

Daihatsu	Yanmar	B&W	Sulzer/Wartsila
➤ DE-18	➤ EY-18	➤ L 16/24	➤ S 20
➤ DK-20 (E)	➤ N-18	➤ L 23/30 (H)	➤ L 20
➤ DC-17 (A)	➤ N-21	➤ L 21/31	➤ L 26
➤ DE-23	➤ EY-22	➤ L 28/32 (H)	➤ L 32
	➤ EY-26	➤ L 27/38	➤ L 46



Overhaul & Services

Order pre-assembled packages such as 12,000, 24,000 and 48,000-hour overhaul kits from stock. Or let DSMS customise a kit according to your needs. We provide this service for all main and auxiliary engines within our scope of supply. These kits are kept in stock and are ready for immediate dispatch anywhere and anytime. We also offer personal budgeting consultations and yearly volume packages.

maintenance/service works required for the installation of the overhaul packages we supply. We work with specialised and dedicated service engineers to deliver comprehensive servicing packages suitable for a wide variety of manufacturers and engine models, including Sulzer, Wartsila, MAN B&W, Daihatsu and Yanmar. Whether it is for an individual unit or an entire fleet. We are here to manage and execute the project from start to finish.

In addition to the above, DSMS offers a complete range of add-on services: for example the





Air starters

To further expand our range of parts and to increase our service level with regards to our 4-stroke engine/generator scope, DSMS has added the availability of quality parts and services for air starters to its program. These parts are according to the latest maker specifications and are of the highest quality. We are offering parts, services, and complete air starters of the following brands:

- TDI
- Ingersoll Rand
- Gali



Pneumatics & Hydraulics

Over the years, Damen Schelde Marine Services has become an expert in the field of pneumatics. We are official Emerson partner for the brands: Aventics, Wabco, Rexroth, Neumatics, ASCO.

With 70 years of experience as an OEM Sulzer manufacturer, Damen Schelde Marine Services has

full documentation of the entire configuration. We know which repair kits are needed for your Sulzer components.

We can recognise the relevant parts from their original part numbers, the Sulzer code numbers or even with the item numbers from the schematic layout.

Partners



Valves



Pumps



Air starters



Repair kits



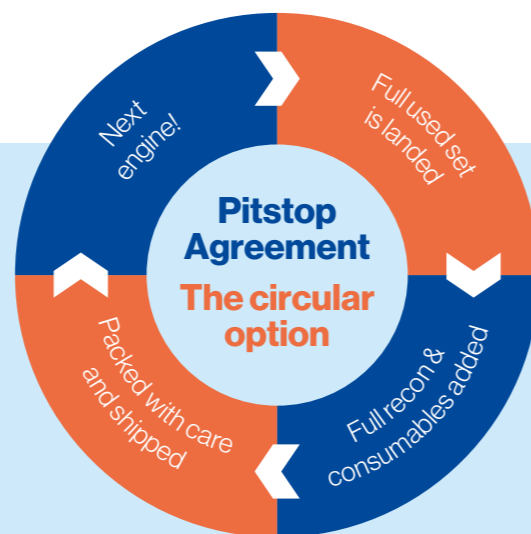


Reconditioning & Services

- ▶ Piston crowns, exhaust valve spindles, cylinder covers, and other reconditioned engine parts are available on an exchange and/or direct sale basis.
- ▶ Cylinder heads and connecting rods can be reconditioned and re-assembled.
- ▶ Fuel pumps, plungers and barrels, spindle guides and fuel nozzles can be completely reconditioned.
- ▶ Overhaul and troubleshooting of pneumatic systems during dockings or port calls around the world can be offered including spare parts that are needed.
- ▶ Import, export and quality control performed inhouse forwarding and quality department.
- ▶ ICU, VCU, ELFI, FIVA, HPS, Alpha lubrication repair/overhaul/service.



Cylinder head overhaul



Global network

A wide range of spares is directly available from stock for worldwide delivery within 24 hours. Our scope covers the following engine or system types:

- ▶ Sulzer | Wartsila
- ▶ MAN B&W
- ▶ Daihatsu
- ▶ Yanmar
- ▶ Auxiliary engine parts
- ▶ Overhaul & services
- ▶ Airstarters
- ▶ NSN
- ▶ Engine Pneumatics | Rexroth Hydraulics
- ▶ Reconditioning & service



The Netherlands
Koningsweg 2 - 3B | Building 141
4381 NA Vlissingen, The Netherlands
+31 118 712 000
info@damenscheldeparts.com

Singapore
Gul Drive 24
629472 Singapore
+65 6265 1270
info@sg.damenscheldeparts.com

China
Shanghai

South-Korea
Busan



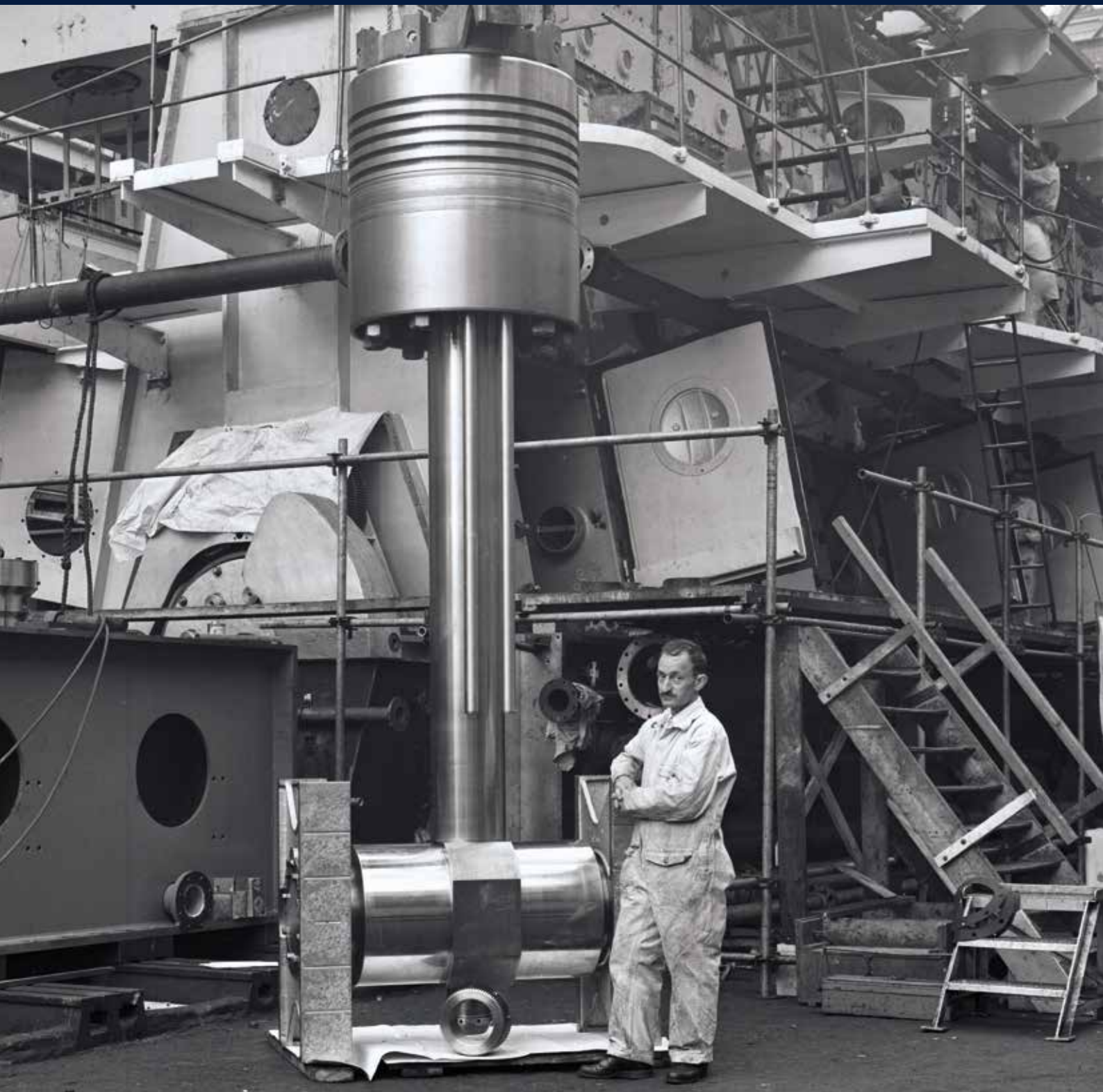
DAMENSCHELDEPARTS.COM



AGENCY NETWORK

Greece | Germany | Turkey | Italy | United Kingdom
Cyprus | USA | India | Hong Kong | Korea | Indonesia





[DAMENSHELDEPARTS.COM](https://damenscheldeparts.com)

DAMEN